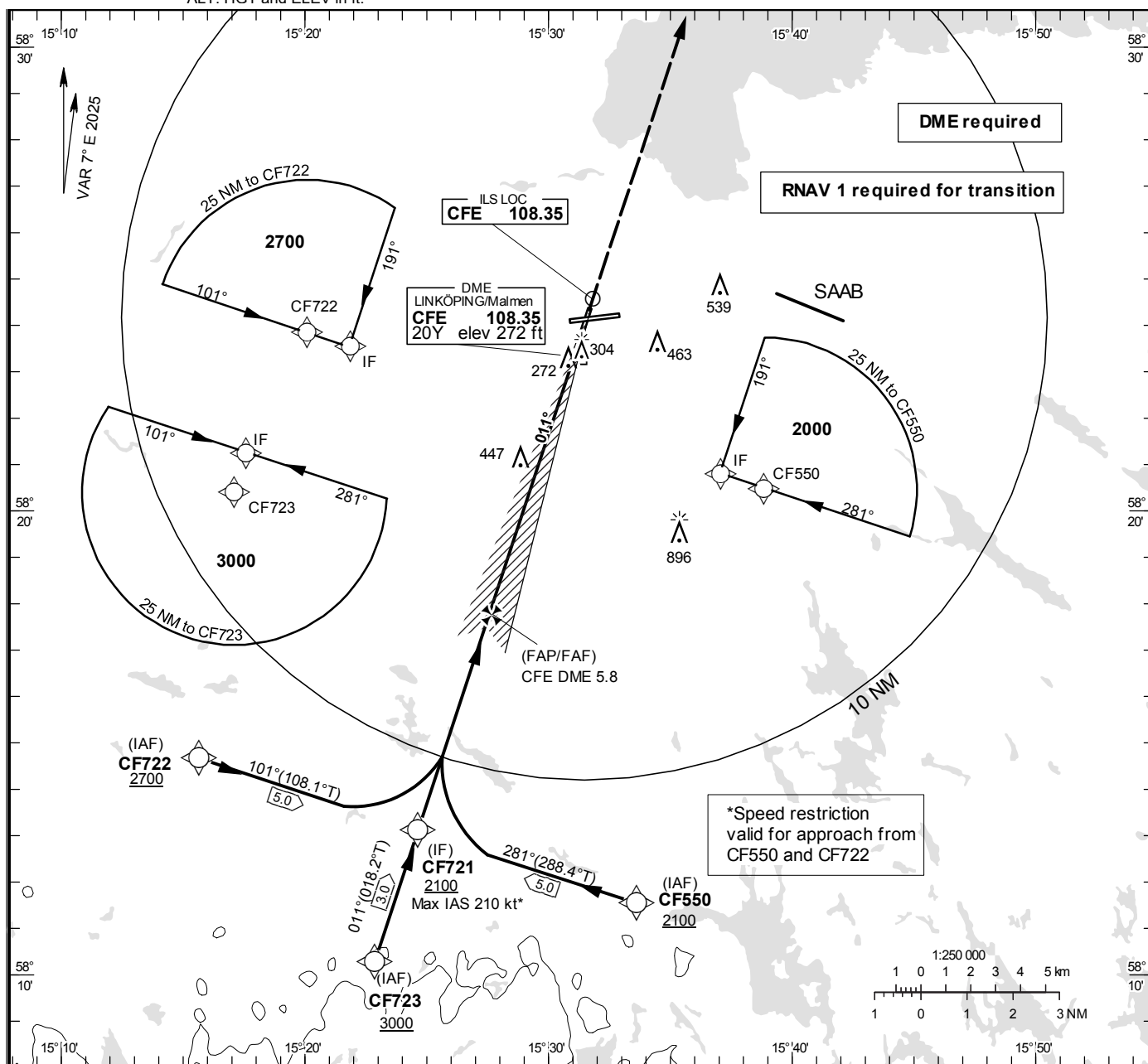


LINKÖPING/Malmen
ILS z or LOC z RWY 01**INSTRUMENT
APPROACH
CHART – ICAO**

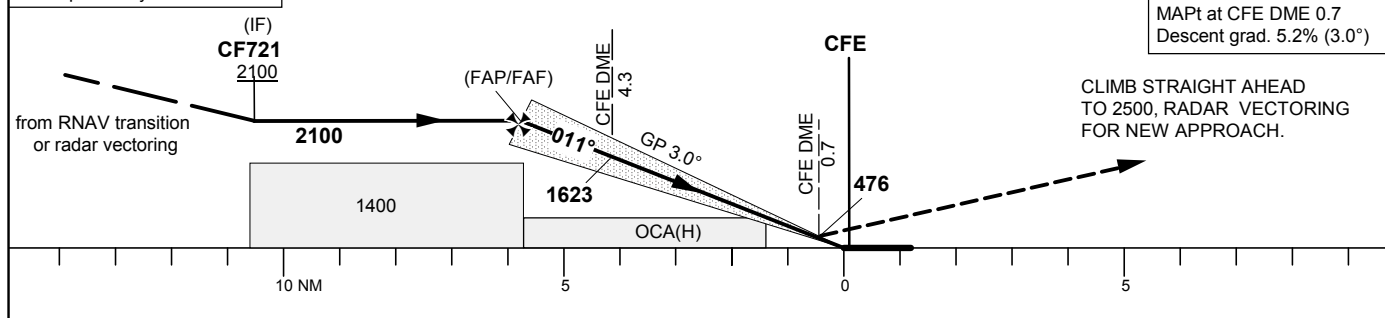
THR ELEV 250.7 ft, AD ELEV 309 ft
OCH are related to THR.
Circling OCH are related to AD ELEV.
BRG are MAG
ALT, HGT and ELEV in ft.

MALMEN TOWER	129.800
ÖSTGÖTA APPROACH	132.955
	135.850

**TA 5000 ft AMSL****RDH 50.0 ft*****Timing not authorized for defining the MAPt**

OM replaced by CFE DME 4.3
MM replaced by CFE DME 0.7

LOC
FAF at CFE DME 5.8 2100
MAPt at CFE DME 0.7
Descent grad. 5.2% (3.0°)



OCA (H)					Final approach		LOC Distance FAF-MAPt 5.1 NM*			
Cat of ACFT	A	B	C	D	DME CFE NM	5	4	3	2	
Straight-in Approach	Cat I	410 (159)	418 (167)	429 (178)	441 (190)	ALT	1850	1530	1210	890
	LOC	700 (450)				GS	kt	80	100	120
Circling		760 (460)	840 (540)	940 (640)	1290 (990)	Time	min:s	3:50	3:04	2:33
						Rate of descent	ft/min	425	530	635
								745	850	955

CHANGE: Editorial